

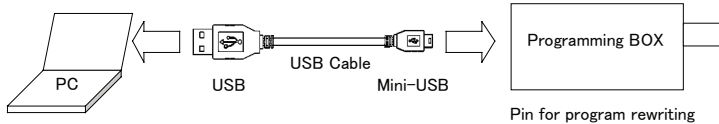
Programming Instructions



Step 1:

Verify you have the following materials:

- Your PC for programming
- Programming Cable (USB)
- CLSD Programming Box
- CLSD Series LED Driver to be programmed

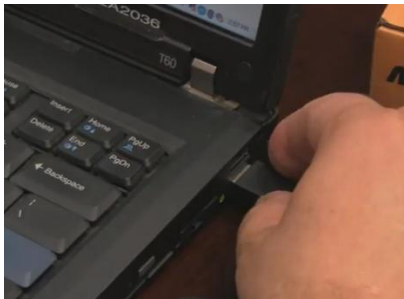


Step 2:

Verify you have completed the installation process. If not, please download the one-time NMB Technologies Programming Utility installer at: <http://www.nmbtc.com/lighting/install>

Step 3:

Plug the USB Connector end of the Programming Cable into your PC.



Step 4:

Plug the Mini-USB Connector end of the Programming Cable into the CLSD Programming Box.



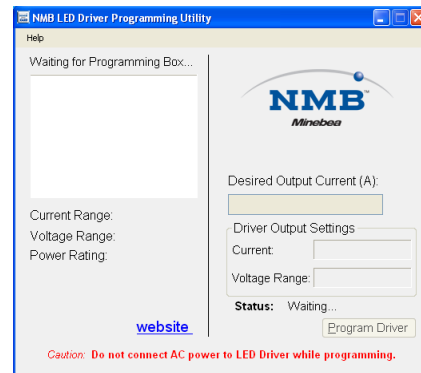
Step 5:

Remove the dust and moisture barrier tape from the side of the Driver. Set this aside for re-application when the driver programming has been completed.



Step 6:

Run the NMB Lighting LED Driver Utility from the Start Menu. The Utility will prompt your next step: "Waiting for Programming Box."



Step 7:

Connect your Programming Box to the CLSD Driver by aligning and placing the box on the pins. Place and hold the Programming Box to the CLSD driver. Programming box Model CLSD004 requires you to maintain contact between the box and the driver while programming. The CLSD005 Programming Box model includes clips for easier mounting.



Step 8:

The LED Driver model and programming parameters will be automatically detected when correctly connected.



Step 10:

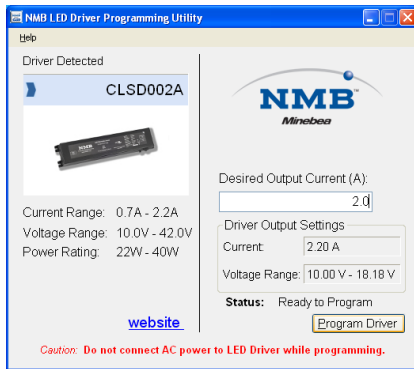
Your desired output current will now match your driver output settings. Your CLSD Driver is now programmed.



Additional driver modules can be programmed by repeating the process with a new driver.

Step 9:

Enter the desired output current and click "Program Driver"



Step 11:

Replace the dust and moisture barrier tape over the programming holes in the side of the CLSD Driver.



Programming is now complete!

NMB

NMB Technologies Corporation
A Minebea Group Company
Corporate Headquarters
9730 Independence Avenue
Chatsworth, California 91311
Tel: 818-341-3355 • Fax: 818-341-8207
lighting@nmbtc.com
www.nmbtc.com/lighting